

Modern
CARNIVAL GLASS
COLLECTORS

BOOK I

1971



By Lloyd Reichel

Price - \$4.00

Modern
CARNIVAL GLASS
COLLECTORS

BOOK I
1971

By Lloyd Reichel

Copyright by Lloyd Reichel

Published by Walsworth Publishing Co.

Distributed by

Lloyd Reichel

Jamestown, Mo. 65046

* * * * *

(Plus .05% Missouri Sales Tax and Postage)

About The Cover Photo

The covered hen is in two parts. Colors are marigold and purple. Some have rocks on side of cover and some do not. Probably two different moulds were used or two different manufacturers. Both types and both colors are of late manufacture and come under our modern carnival glass. However an old covered hen was made also. Manufacturer unknown.

Foreword

Collecting articles of different kinds has been a hobby for many people for many years. Carnival Glass, although not old is very collectable and some pieces rare and very valuable. This leads us up to the modern iridescent glass which we are referring to as modern carnival glass. Some of this late carnival glass is no longer being made and some in very limited quantity. Various colors, sizes, shapes and patterns attract collectors from all parts of the world, like a hurricane in places. Clubs have been formed and more are being formed each year.

It is our aim to inform the modern and old collectors of this much hunted glassware to the best of our ability. Of all the carnival glass in our modern time, some is still available on

the present day market and some is only available from collectors and modern carnival glass dealers.

We wish to point out that we believe we have the correct information as to manufacturer, distributor, color, patterns and etc, but, we are not to be held liable.

About The Author

Lloyd Reichel, Jamestown, Mo., collector of carnival glass for 30 years. Member of the International Carnival Glass Association, Charter No. 222. Married to Fern Reichel, and have two sons, Mickey and Dale; two daughters, Cheryl and Nancy, all are modern and old carnival glass lovers.

Some of the known modern carnival manufacturers of today are:

Dagenhart
Fenton
Hansen
Imperial
St. Clair
Wheaton/Nuline
Wright

Also listed - some pieces of unknown manufacturers. Some of these makers sign their wares and some do not. Some of the same patterns and pieces were signed, also some are not. Some of the same pieces are of different weight. It seems that some pieces were signed, then some more made that weren't. Then re-continued to be signed when more were made. Price list is not suggested at this time.

Dagenhart

We have found very few pieces by Dagenhart to this date. One piece is the owl in dark glass and iridescent approximately 3 1/2" tall overall, perched on two books.



Colors:
Blue

Dagenhart

TOOTH PICK HOLDER

We have found these in two weights - some signed and some not signed. Either that or two different manufacturers with same pattern.

Colors:
Green
Amethyst



Fenton

Colors:
Dark
Amethyst



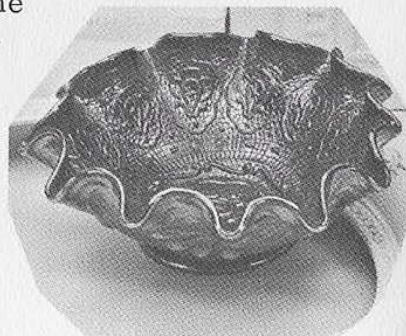
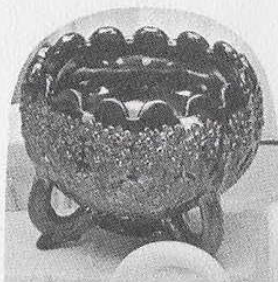
Signed



on bottom

Fenton has been making new patterns since Jan. 1970. Also has found some old moulds as the orange tree 3 footed rose bowl on left below and the Persian medallion bowl on the right below.

Signed
as above
with same
colors.



Fenton



A new pattern with same colors and iridescent also marked with same signature.



New creations by
Fenton

A new piece very beautiful with colors same as above and signed on bottom also. 10 1/2" tall.



Fenton



BASKET

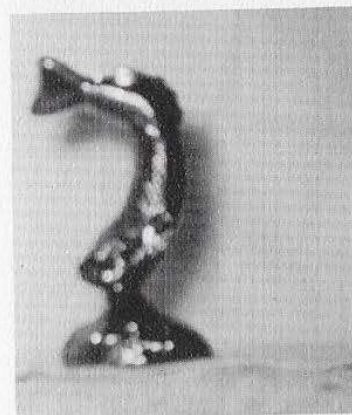
Similar to the old carnival in pattern - color. Also dark with rich iridescent signed on bottom.

NOTE: The boot below is unsigned, although some may have been.

This boot is daisy and button; approximately 4" tall; dark amethyst with appearance of blue like other Fenton creations. It is probably a match or toothpick holder.



Fenton

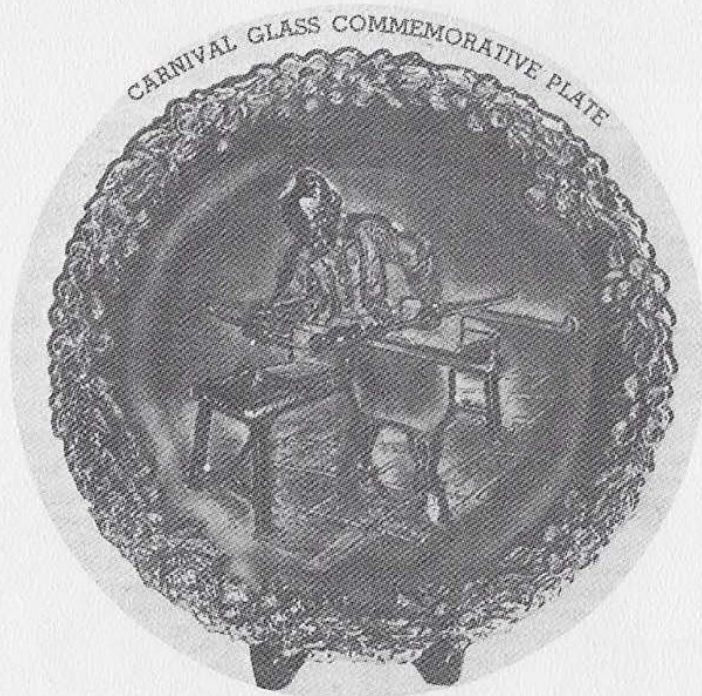


These two pieces are rich in blue iridescent and color of glass is deep amethyst. Both are signed.

The fish is approximately 5" tall and a paperweight. However the vase is much taller and resembles an old pattern from the old mould.



Fenton



This plate is 8" diameter signed on back. Rich iridescent in blue on amethyst glass. More of these kind of plates to follow.

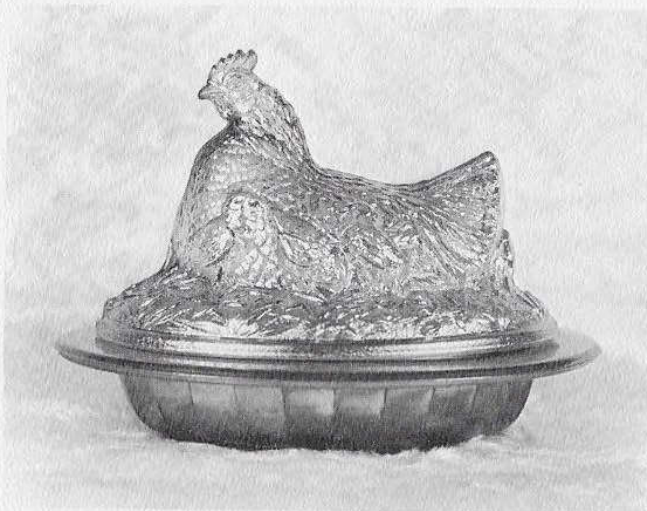
Fenton

CHRISTMAS PLATE -First Edition-



This plate is 8" diameter signed on back. Same rich iridescent in blue on amethyst glass. It is our understanding a new plate will be issued each year for several years.

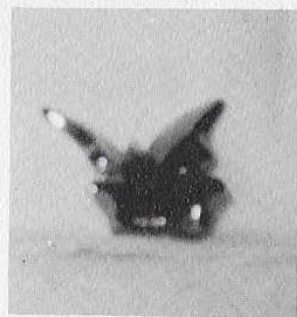
Fenton



All pieces are in blue iridescent on amethyst glass.

BUTTERFLY

Same as above but is 3" by 4" and is probably a paper weight.



Fenton

There are two large vases in purple being made now. Also some various compotes and bowls in purple. Photos weren't available at this printing.

Hansen

Very little is known about the Hansen Creations at this time. There has been very little released it seems, and only to a few dealers. From what I have found out, they make several toothpick holders in various patterns and colors. Our second edition will carry them if at all possible. Anyone knowing of their wares and wants to help the collectors you may contact the Author.

Imperial's First Issue Christmas



Blue iridescent on deep amethyst glass 8 3/4" diameter. First day of Christmas - one of series of Twelve Days of Christmas, one to be released over twelve year span.

Order Additional
Copies Now!!

Special discounts for dealers upon request.

LLOYD REICHEL
Jamestown, Mo.
65046

Name _____

Address _____

City/State _____

Zip _____

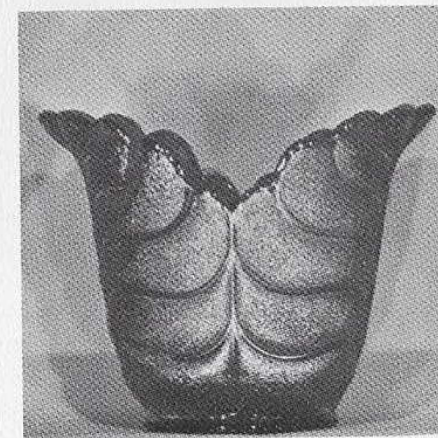
Please enclose \$4.00 plus tax, plus 25¢ for
postage and handling for each copy ordered.

Imperial
Aurora Jewels in Cobalt Blue
1970



8 3/4" - 3 Swan Vase

Rich in color, all Imperial signed on bottom,
some on top.



6" Vase

Cobalt Blue with rich
iridescent.

Imperial



7 1/2" 3-toed Bowl

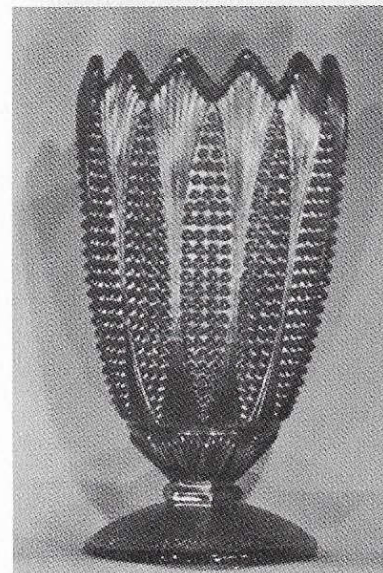
Aurora Jewels cobalt blue.



10" 3-toed Bowl

Same color as above.

Imperial



9 1/2" "Corn" Vase

Aurora Jewels cobalt blue

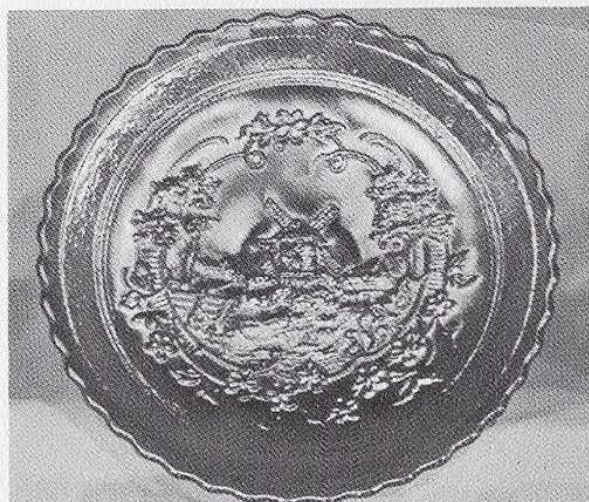
Both made in
1970



7" Bowl

No named pattern as
yet - Cobalt.

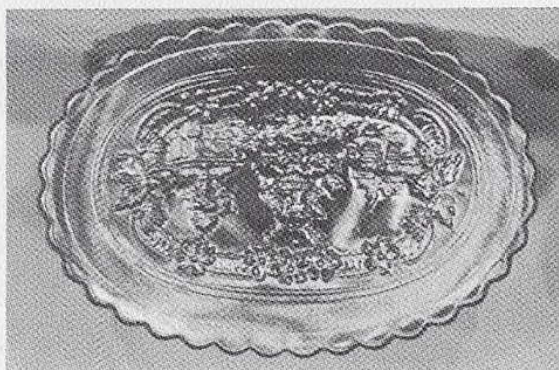
Imperial



9 1/2" Plate

Windmill
Pattern

AURORA JEWELS - COBALT BLUE



9" Oval
Plate

Windmal
Pattern

Imperial



9" Bowl

"Ram's" Head
Pattern

AURORA JEWELS - COBALT BLUE



6" Candleholder

"Ram's" Head
Pattern

Collector will want two
and the above center
bowl.

Imperial



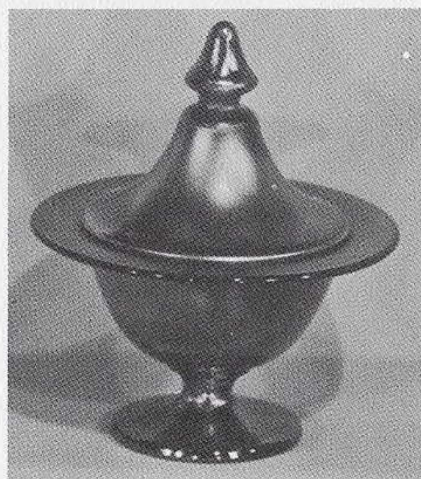
Covered Jar

Similar to the old
Imperial Grape Pattern.
Remember all are
signed.

AURORA JEWELS - COBALT BLUE

Covered Box

Candy Dish similar
to the old Imperial
Jewels.



Imperial



5" Vase

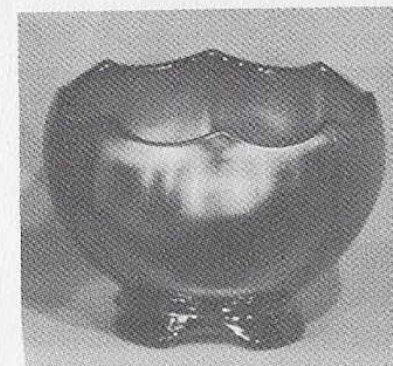


6 1/2" Vase

All signed
by Imperial



Goblet
"Kite and Panel"



5 1/2" Rose Bowl

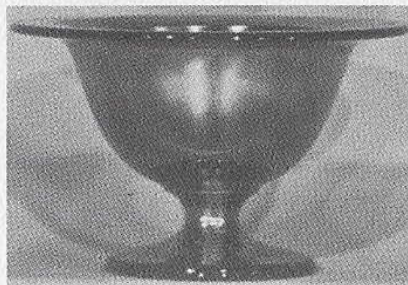
Imperial

AURORA JEWELS - COBALT BLUE
Signed



4 1/2" 3-toed
Candle Holder

6 3/4" Compote
Similar to
Imperial Jewels



4 1/2" Swan

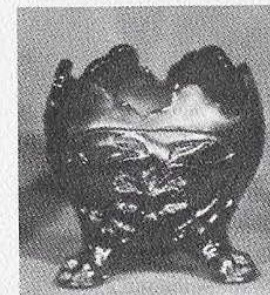
Imperial

AURORA JEWELS - COBALT BLUE



5" Footed Compote
Similar to an old pattern

3" - 3-toed Rose
Bowl or Nappy



"Story Book"
Mug

Imperial

AURORA JEWELS - COBALT BLUE

1970 creations - remember these and all proceeding pages of photos are signed.



"Top Hat"
Toothpick Holder

4 3/4" Compote
Crimped



Toothpick
Holder

Imperial

AZURE BLUE OR ICE BLUE - 1970

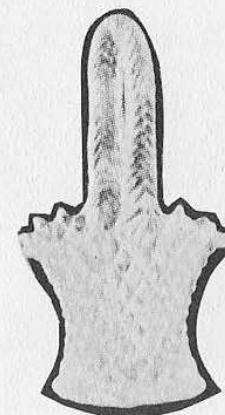
Keep in mind all Imperial in this book is signed with their famous signature shown on page 19.



Toothpick Holder
Also in Green



3" Cornucopia



5 1/2" Basket



5" Eagle
Trivet



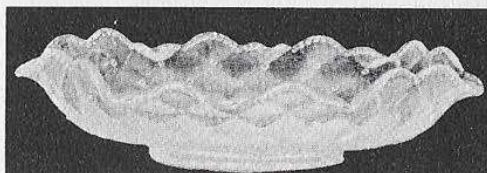
Urn



Boot

Imperial

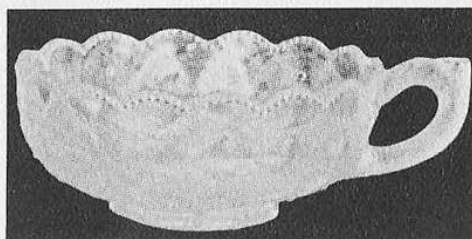
AZURE OR ICE BLUE - 1970



8 1/2" crimped oval bowl,
pansy pattern. Also in green
and marigold.



Rooster



5 1/2" Nappy Handled



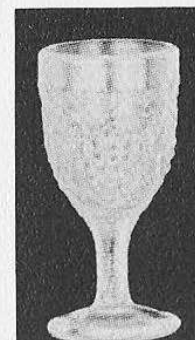
Goblet

Imperial

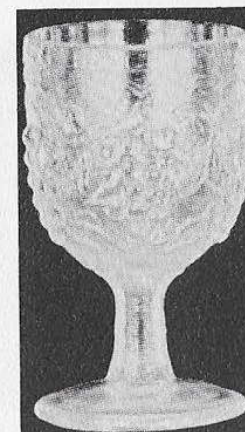
AZURE BLUE OR ICE BLUE - 1970



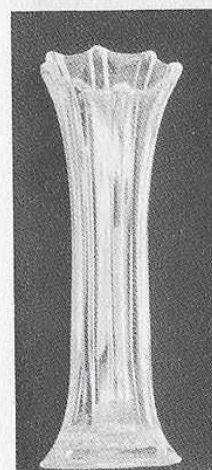
Decanter and
Stopper, grape
pattern in green,
ice blue, mari-
gold and dark
purple.



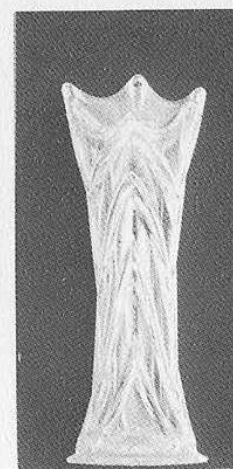
3 oz. wine to
match in same
colors and
pattern.



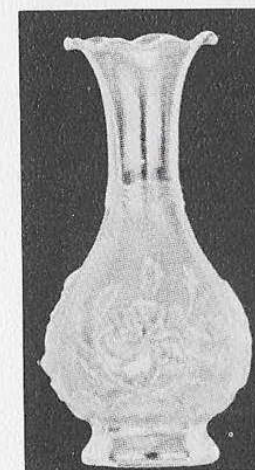
10 oz. goblet in
same colors and
pattern.



11" to 14"
Swung Vase



9" to 12"
Swung Vase



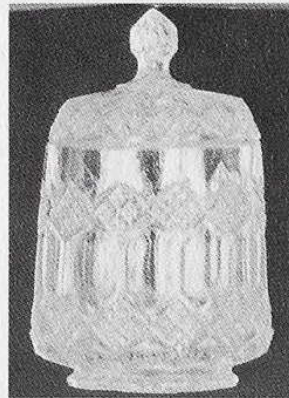
6"
Rose Vase

Imperial

AZURE OR ICE BLUE - 1970



Covered Jar
Probably Candy
Container



Jar and Cover
Cracker or
Cookie Jar



"Zodiac"
Candy Box
and Cover

Imperial

AZURE OR ICE BLUE - 1970



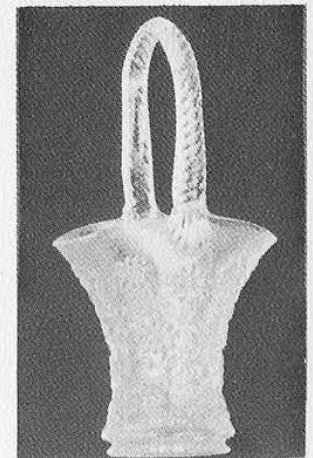
8 1/2" Drama
(Masque) Vase



4 3/4" Compote
Crimped



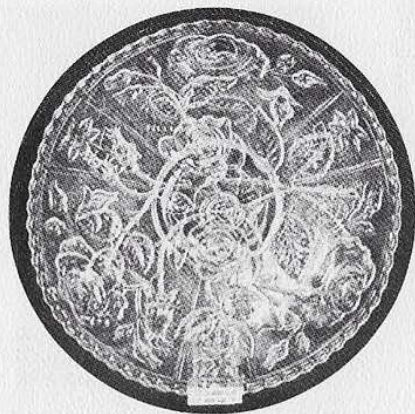
4 3/4" Crimped
Compote



9 1/2" Tall
Basket

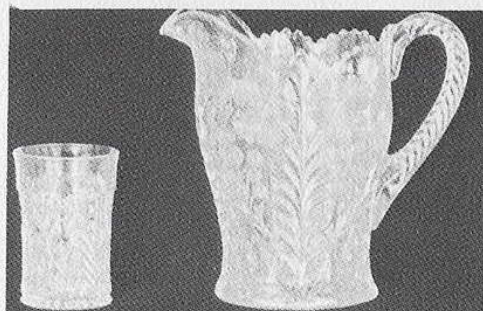
Imperial

AZURE OR ICE BLUE - 1970



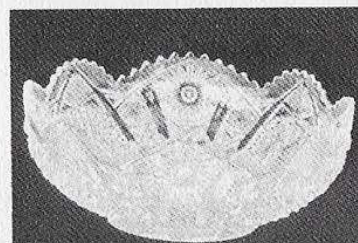
10 1/2"
Plate
Roses

10 oz.
Tumbler
and
3 Pint
Pitcher



Imperial

The last page of AZURE OR ICE BLUE
created in 1970.

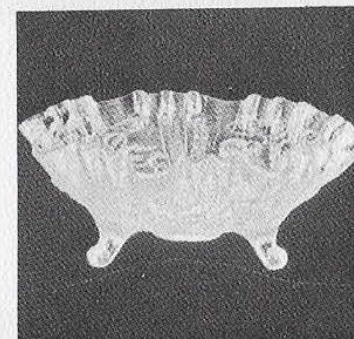


10" Bowl

This pattern also
created a few years ago
in marigold and purple
discontinued.

8" 3-toed
Bowl with Roses.

Also found few years
ago in marigold.
Discontinued.



7" Crimped
Compote

Imperial

Sunset Ruby or Red Carnival signed the same way as all Imperial Modern Carnival Glass as on page 19 of this book. This is very beautiful and is being sought after very heavy now. It's already hard to find at a fair price. Several old carnival glass collectors can't find the old red so want a piece of this charming sunset ruby.



9 oz. Tumbler
9" Pitcher/Vase

7" 3-toed
Compote



Imperial

RUBY GLASS OR RED CARNIVAL



Sugar



Creamer



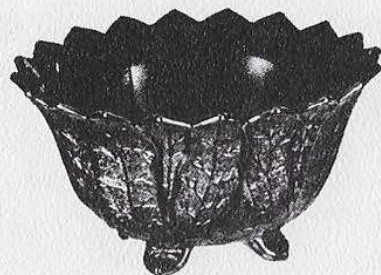
Robin Mug



Toothpick Holder

Imperial

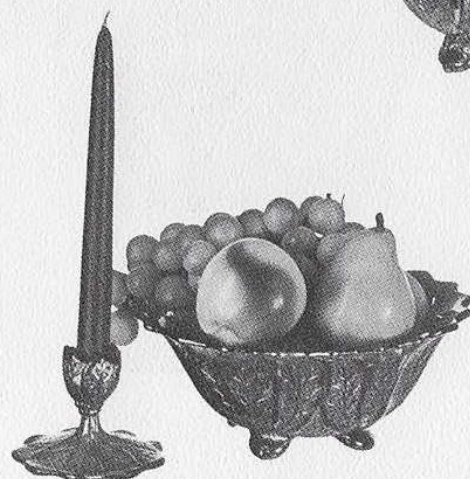
RUBY GLASS OR RED CARNIVAL



8" 4-toed Bowl

All four the same pattern with slight different shape.

8" 4-toed Bowl



3" Candleholder
and
7" 4-toed Bowl

Imperial

RUBY GLASS OR RED CARNIVAL



9" Footed Vase
made a few years
earlier. Also in
marigold, green
and amethyst or
dark. Some now
rare.



8" Rose Bowl



9" 3-toed Bowl



8" Footed Vase

Imperial

RUBY GLASS OR RED



Cookie or
Cracker Jar
and Lid



Covered Box
Dish



7 1/2" Compote



5" Compote

Imperial

RUBY GLASS OR RED



6 1/2" Vase



6" Vase



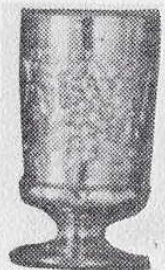
7" Bowl



8" Bowl
old pattern

Imperial

Some of the pieces on the next several pages are re-issue of the early carnival glass but bear the signature as found on page 19, which all modern Imperial iridescent glass has to this issue. Some of these pieces are discontinued and no longer being made in some colors and some pieces are no longer being made. The pieces in green are quite rare and hard to find. For the collector that collects for profit as well as a hobby will find this very interesting indeed. Start studying and collecting the hard to find pieces, they will likely increase in value each year.



Grape Pattern

One of the pieces discontinued found in marigold, green, and purple.

Imperial

SOME HARD TO FIND

DISCONTINUED PIECES



Covered
Rooster
Colors:
Marigold
Purple



Covered
Lion
Colors:
Marigold
Purple

Imperial

NICE PIECES TO FIND

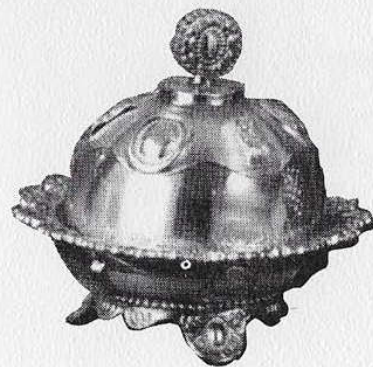


Found in creamer and covered and open sugar with holes around rim to hold spoon. Discontinued.
Colors: Marigold, Purple, and Smokey.

Tall Basket
Colors:
Marigold
Purple



Lid and Bottom
Footed Dish
Colors:
Marigold
Purple



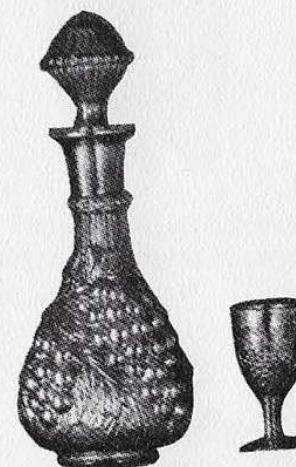
Imperial

ANOTHER RARE PIECE AND DECANTER, WINE AND GOBLET



Compote
Colors:
Marigold
Purple
Discontinued

Decanter and Wine
Colors: Ice Blue
Marigold
Purple
Green



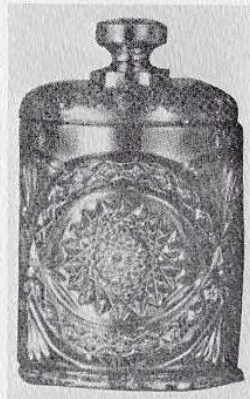
Stemmed Goblet
Discontinued
Colors:
Marigold
Green
Purple

Imperial

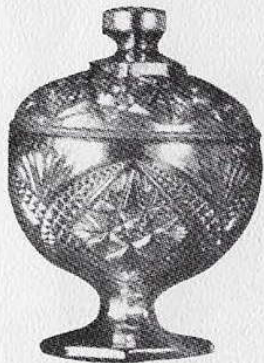
FIND THESE RARE PIECES
ONLY MADE A FEW YEARS AGO



Covered Sugar Footed
Colors: Marigold, Purple



Cracker Jar
Colors: Purple, Marigold



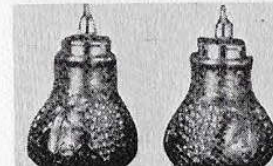
Covered Compote
Colors: Marigold, Purple



Covered Sugar
Colors: Marigold, Purple

Imperial

The famous grape pattern is shown here in a pitcher. They were two pitchers nearly alike except the lines above the grapes one we are showing. Some more grape dishes not shown are as follows: sherbet, glasses, stemmed sugar and creamer, small nappy, decanter, smaller than their famous one shown previous. Also we will show on following pages some discontinued pieces.



Salt and Pepper
Marigold and Purple
Discontinued



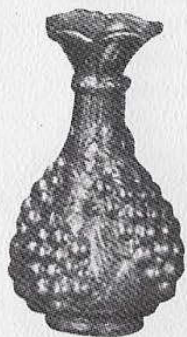
Decanter and
Stopper. Also in
Purple and
Marigold



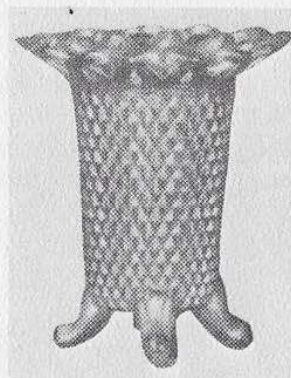
Pitcher
Marigold and Purple

Imperial

ANOTHER GRAPE PATTERN AND OTHERS
Re-issue



Colors: Marigold,
Purple in Grape



4-toed Vase
Colors: Smokey,
Marigold, Purple



3 pt. Pitcher
9 oz. Tumbler
Colors:
Marigold
Purple



Antiques and Reproductions in Glassware and Furniture

WE ALSO SELL NEW CARNIVAL
GLASS. WHOLESALE AND RETAIL.

Lloyd Reichel

Jamestown, Mo.
65046

Phone:
816-849-2430

AUCTIONS Complete Service

Consignments

Antiques

Estates

Household

Real Estate

Liquidations

* * * * *

In State or Out-of-State

CALL: 816-849-2430

WRITE:

Mid-States Auction Service

Lloyd Reichel

Jamestown, Missouri 65046

Bottles

Wheaton - Nuline

Beam

Brooks

Avon

McCormick

O.B.R.

Most others Some Old

* * * * *

WRITE YOUR NEEDS:

Missouri Bottle Company
Lloyd Reichel
Jamestown, Missouri 65046

Carnival Glass

We Specialize in
Carnival Glass, Modern
and Old. Write Your
Needs. We Buy and Sell
Collections. Lots On Hand
At All Times.

WRITE OR CALL:

Lloyd Reichel

Jamestown, Mo.
65046

Phone: 816-849-2430

Imperial Vases



Colors:
Marigold
Purple



Colors:
Marigold
Purple



A Footed or
Pedestal Vase
Colors:
Purple
Marigold
Green

Imperial Vases



Colors:
Marigold
Purple



Colors:
Marigold
Purple



Colors:
Marigold
Purple

Imperial

RE-ISSUE IN WATER SET,
ALSO LARGE COMPOTE



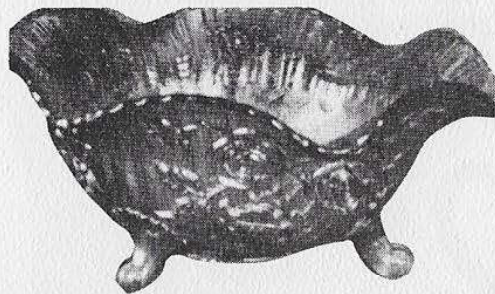
A Re-issue
of Water Set
Colors:
Purple
Marigold



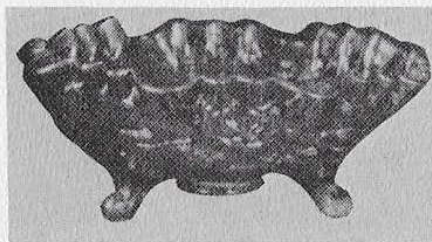
Large Fruit
Stand or
Compote
Colors:
Purple
Marigold



Imperial - Re-Issues

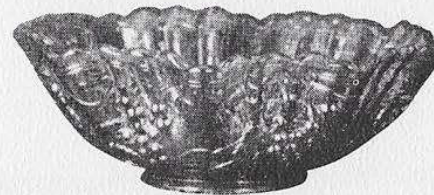


3-toed large bowl of coursed
signed as all Imperial as shown on
page 19. Colors: Marigold, Purple.



Another 3-toed bowl of re-
issue. Colors: Marigold, Purple.

Imperial - Re-Issues



Large
Fruit Bowl
Colors:
Marigold
Purple

Pedestal
Bowl
Colors:
Purple
Marigold



Master Swan
Colors:
Marigold
Purple

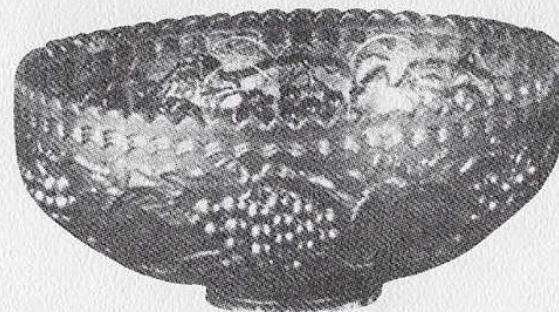
Imperial

We have seven more pieces of discontinued carnival glass and in order to make no error in collecting, we will show only one piece to the page. It is our wish to show good detail so even a new collector can tell what to look for even if he or she has never collected carnival glass.



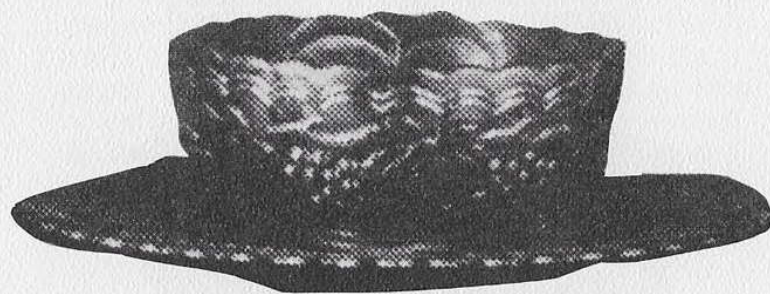
The Windmill Pattern is a water set. Colors: Marigold, Purple. Note: a new water set is out, but no many, with the center circle frosted and the other marigold. Quite rare and pretty.

Imperial - Discontinued



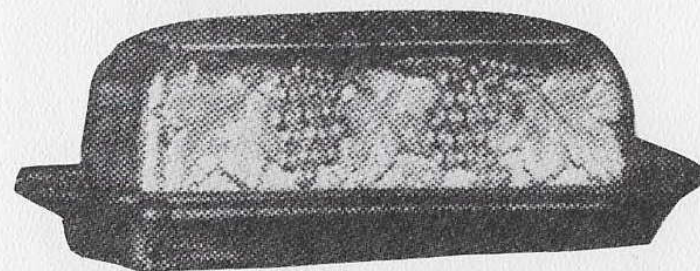
Large Grape Pattern
Bowl
Colors: Purple, Marigold

Imperial - Discontinued



Cup and Saucer
Grape Pattern
Colors:
Marigold
Purple
Green

Imperial - Discontinued



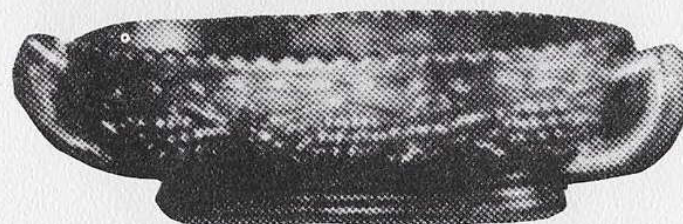
Butter Dish and Lid
Grape Pattern
Colors:
Marigold
Purple

Imperial - Discontinued



Beaded Vase-toed
Very Rare
Colors:
Marigold
Purple

Imperial - Discontinued



Grape Pattern
2 Handled Relish or
Pickle Dish. Very Rare.
Colors: Purple and
Marigold

Imperial - Discontinued



A Squatty Vase
Hardly Ever Seen
Colors:
Purple
Marigold

Imperial - Discontinued



Salt and Pepper
Try to Find
These in
Either
Marigold or
Purple

Imperial

This is the last page of the famous Imperial Modern Carnival Glass. We have two pieces we don't have photos of, and will describe to you.

A re-issue of Star and File pattern in a large punch bowl and punch cups, in purple and marigold.

A new 11 inch plate in red was made as a commemorative of Capitol in Washington. These plates are quite rare and highly collectable and increasing in value rapidly.

Everyone wants a piece of red carnival glass for their collection.

Wright Glass

We have two photos believed to be manufactured by Wright.



Drape Pattern
With Hobnail
Tooth Pick Holder
Color: Blue



King Fisher
Tooth Pick Holder
Colors:
White
Blue
Pastel

St. Clair

A few pages of Tooth Pick Holders thought to be manufactured by St. Clair. Limited amount made.



Swan
Colors:
Marigold
White
Blue

Indian Head
Colors:
White
Blue
Red
Marigold
Ice Blue
Custard



St. Clair

TOOTH PICK HOLDERS



Swirl
Colors:
White
Blue
Marigold



Cherry
Colors:
White
Marigold
Blue

St. Clair

More Tooth Pick Holders made in very small quantity.



Holly
Also made in
Tumblers
Colors:
Ice Blue
Marigold
Blue
Butterscotch
White

Cacti
Also, made
Salt and Pepper
Colors:
Blue
White
Marigold



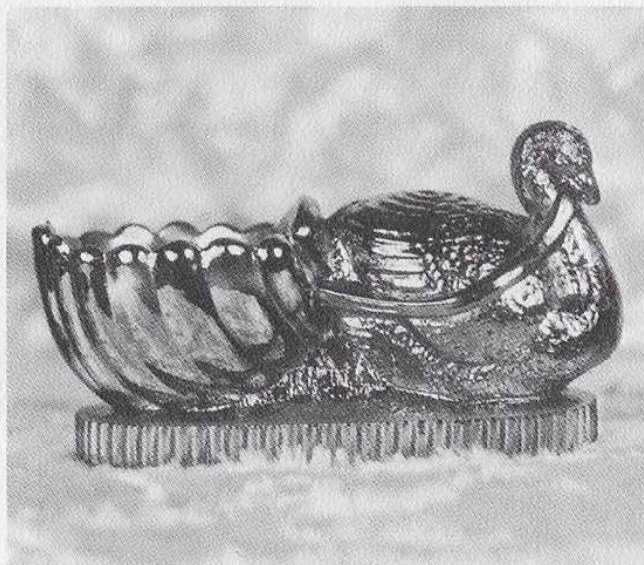
St. Clair

The Feather Plume comes in Tumblers and Tooth Pick Holders.



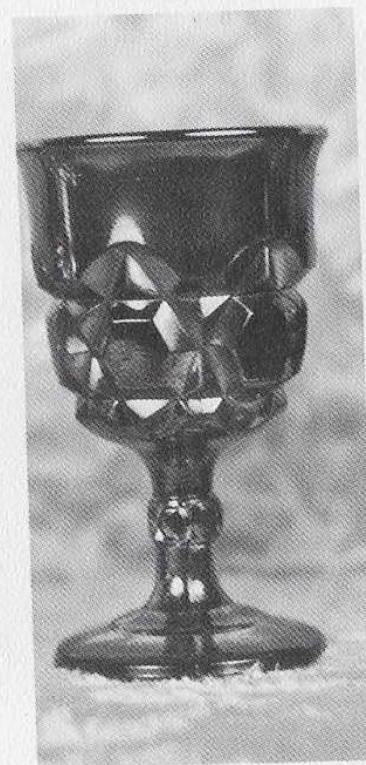
Colors:
Blue
White
Marigold
Ice Blue

Unknown



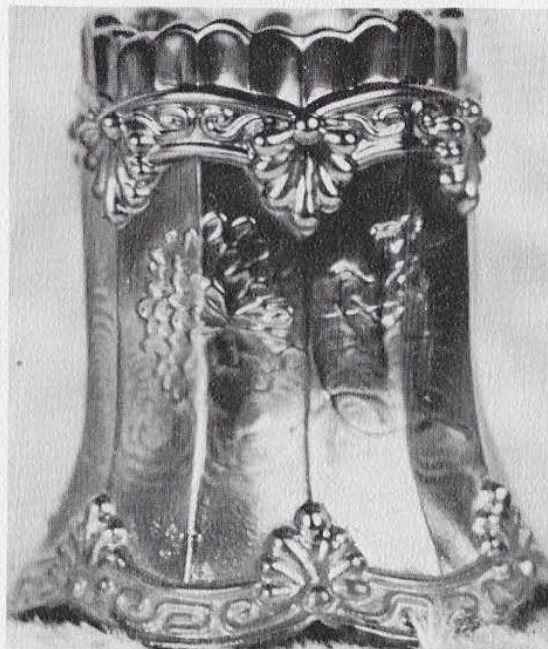
Turkey
Salt or
Tooth Pick Holder
Color:
Blue

Unknown



Winer
Color:
Blue

Unknown



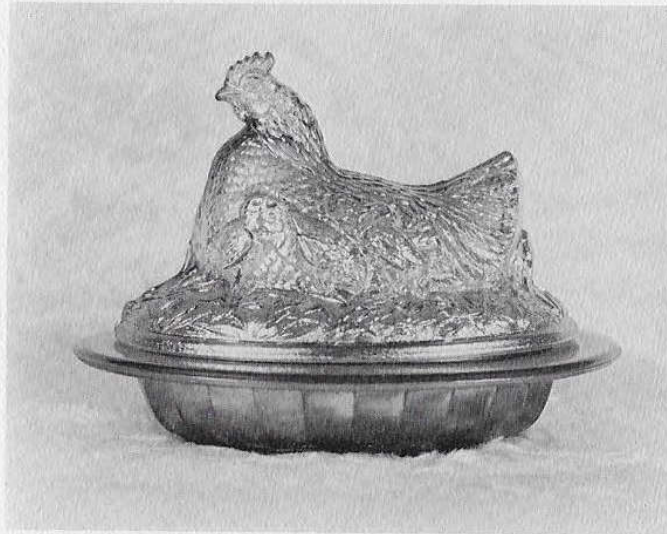
Tooth Pick Holder
Chrysanthemum
Color:
Blue
Rare

Unknown



Tooth Pick Holder
Made Like the Old Flute
Except for Beads at Bottom
Colors:
Red
Amethyst

Unknown



Covered Hen explained on page two.

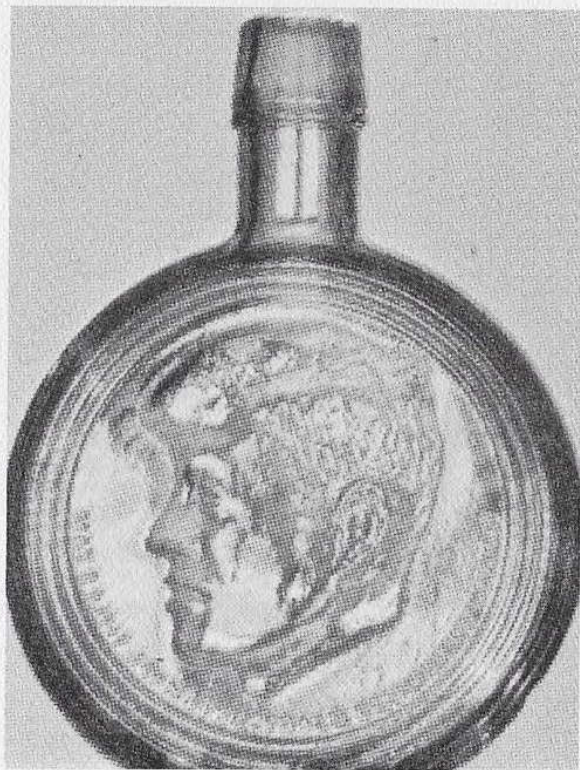
Also, we have just found Creamer and Sugar with grapes in blue. Also, Ice Tea Pitchers with very poor color: Candle Holders and Berry Sets in marigold.

Wheaton/Nuline

Iridescent glass bottles we call Carnival Glass of the Modern Era. Carnival Glass lovers will love these and want to collect an entire series. Only a few of these are issued each year and the first issues are increased in value rapidly and hard to find. Even bottle collectors want these. This line of Modern Carnival Glass has out a town pump on a bottle for the International Carnival Glass Association in 1969. It also has the St. Louis Arch and the Spirit of St. Louis Plane on the back. Others made at this time, are some bottles that aren't iridescent but we are including them for the bottle collector. The Presidential Series. The Great American Series. The Astronaut Series and The Campaign Series.

Wheaton/Nuline Presidential Series

We will show one to the page to get good detail. There are seven modern carnival glass bottles and one frosted white bottle. They will be in order as issued.



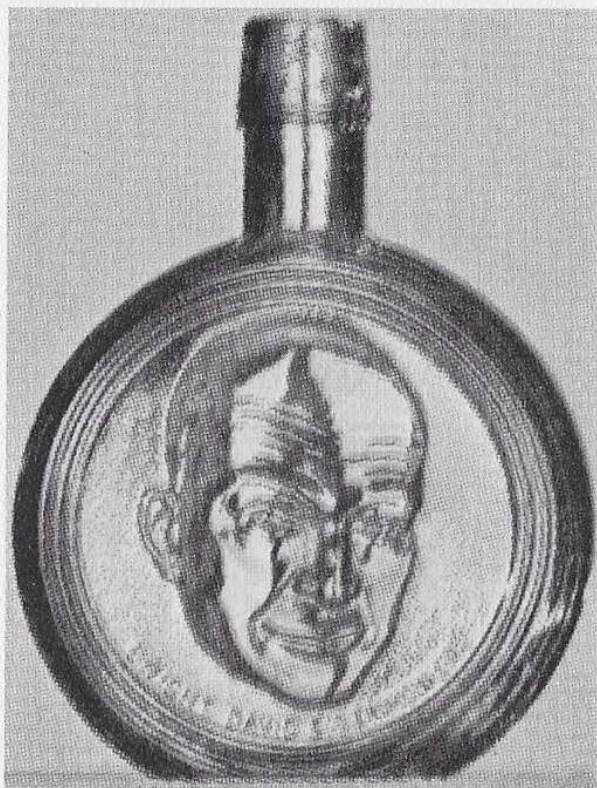
John F. Kennedy - The first to be issued. It is already advertised in places as high as \$60.00. Colors: Pastel Blue.

Wheaton/Nuline



Franklin D. Roosevelt
Second Issue
Color: Green

Wheaton/Nuline



Dwight D. Eisenhower
Third Issue
Color: Amethyst

Wheaton/Nuline



Abraham Lincoln
Color: Marigold

Wheaton/Nuline



General Eisenhower
(Special edition issued upon the
occasion of his death.)
Color: Green

Wheaton/Nuline



Woodrow Wilson
Color: Blue Like Ice

Wheaton/Nuline



George Washington
This is shown for the
Bottle Collectors. Its
color is frosty white.
(Not Carnival Glass)

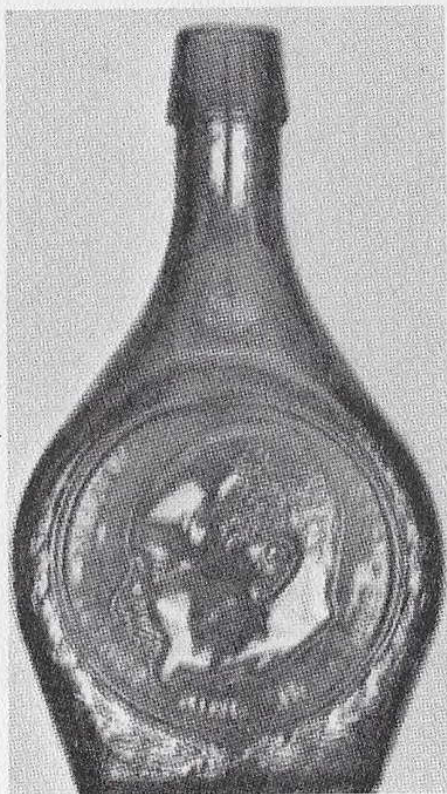
Wheaton/Nuline



Theodore Roosevelt
Color: Purple
The last of the Presidential
Series to Date.

Wheaton/Nuline

THE FIRST OF THE
GREAT AMERICAN SERIES



Martin Luther King
Color: Marigold

Wheaton/Nuline



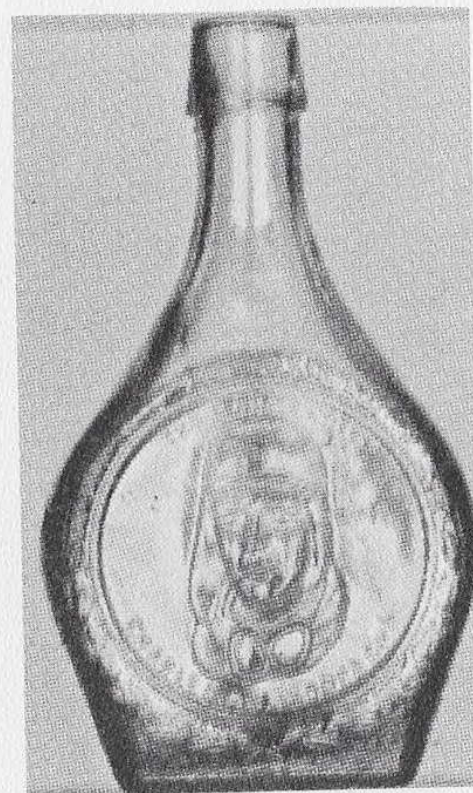
Robert Kennedy
Color: Green

Wheaton/Nuline



Douglas MacArthur
Color: Dark Blue

Wheaton/Nuline



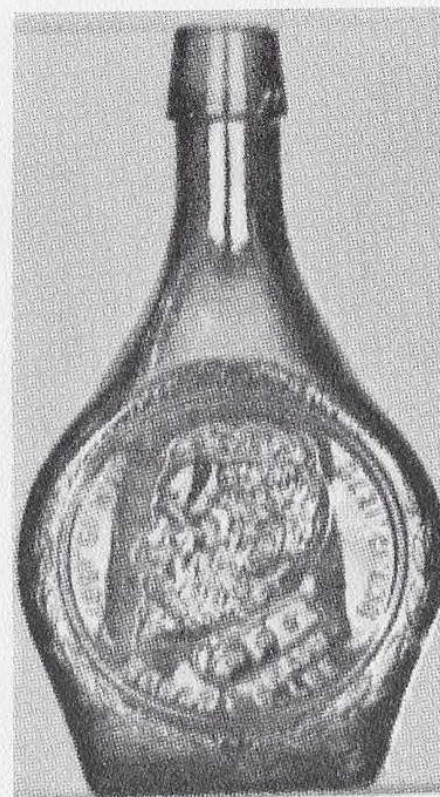
Charles A. Lindberg
Color: Ice Blue

Wheaton/Nuline



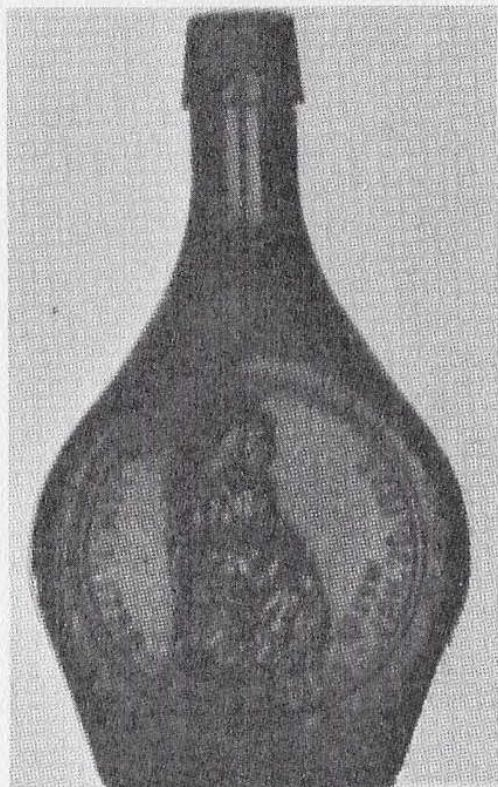
Thomas Alva Edison
Color: Purple

Wheaton/Nuline



General Robert E. Lee
Color: Amethyst

Wheaton/Nuline



Betsy Ross
Color: Red - (No Iridescent)
Bottle Shown for the
Bottle Collectors

Wheaton/Nuline



Will Rogers
Color: Marigold

Wheaton/Nuline



Benjamin Franklin
Color: Blue

Wheaton/Nuline



Billy Graham
Color: White (No Iridescent)
Bottle Shown for the
Bottle Collector

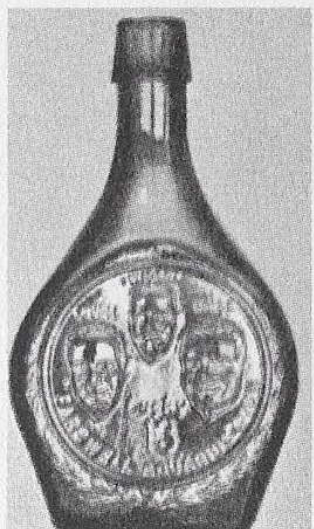
Wheaton/Nuline The Astronaut Series



Apollo XI
Color: Blue



Apollo XII
Color: Red
(No Iridescent)



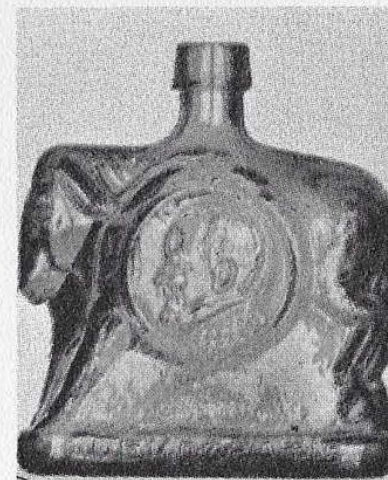
Apollo XIII
Color: Purple

Wheaton/Nuline The Campaign Series



Elephant Bottle

Made in 1968. Nixon on one side, Agnew on the other. Colors: Yellow/Orange. No iridescent. Bottle shown for bottle collectors.

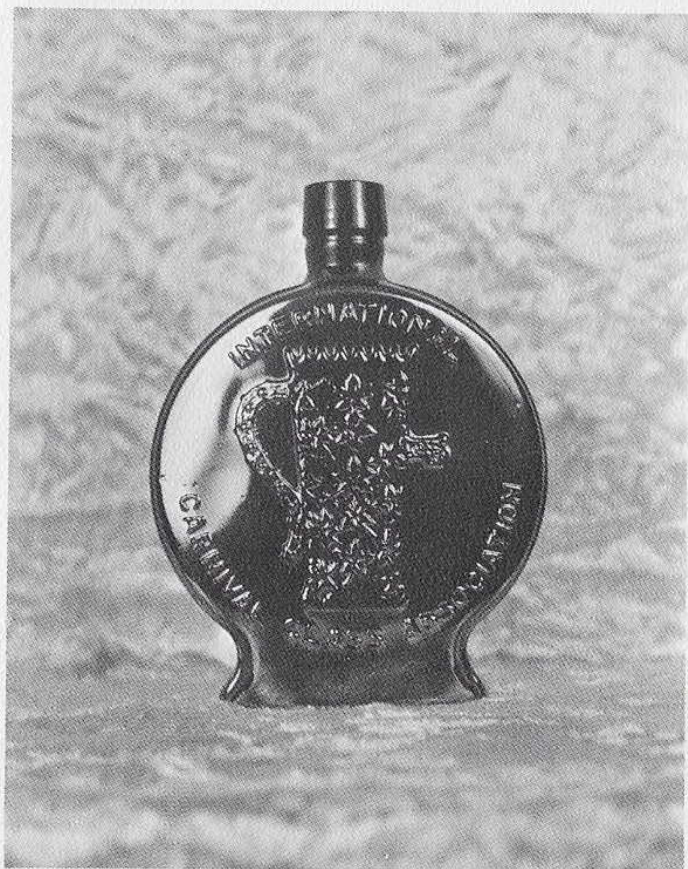


Donkey Bottle

Made in 1968. Humphrey on one side and Muskie on the other. Color: Green. No iridescent. Bottle shown for the bottle collectors.

Wheaton

A SPECIAL BOTTLE MADE FOR THE
I.C.G.A. AS TOLD ON PAGE 77.



International Carnival Glass Association
Bottle made in 1969. This is an old carnival
glass club.

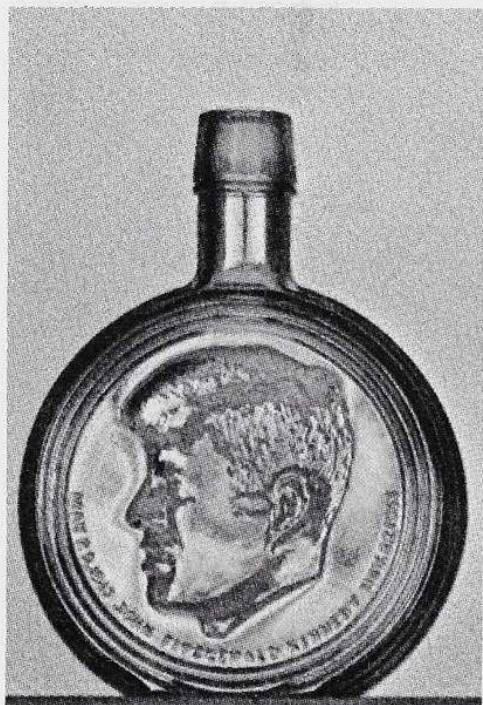
Unknown

We have just found a Johnson Hat,
made like a Texas 10 gallon hat in
purple. This also comes in marigold.
We have heard of some more Tooth
Pick Holders that have been made and
the maker is now just passed away. We
are checking into this.

By the Author

We hope we have helped old Carnival Glass collectors as well as the new Carnival Glass collectors of Modern Carnival and Bottles. Prices aren't established as yet. Later we will try to publish a fair price of the most wanted pieces. Also, we will continue to search for any other new or modern carnival glass as it comes out and any that may already be out.

Thanks!



J. F. K.

The first edition of the Wheaton - Nuline
which is now very rare. Price is climbing
day by day.